

16 Barcheston Close, Derby, DE21 2QG

£1,200 Per Month





**** FULLY MODERNISED AND EXTENDED BUNGALOW **** Semi detached bungalow offering a hall, lounge open through to a new fitted kitchen and dining room, conservatory with air conditioning, two bedrooms and a bathroom. Ample parking to the front and an enclosed rear garden.

HALL

Entrance door into the hall, storage cupboard with new boiler and doors to -

LOUNGE

Tunnel light, radiator and open through to the dining room and kitchen.

KITCHEN

New fitted kitchen with work surfaces, sink unit and appliance spaces.

DINING ROOM

Air conditioning unit and patio doors into the conservatory.

CONSERVATORY

Double glazed windows and doors onto the garden.

BEDROOM 1

Upvc double glazed window and radiator,

BEDROOM 2

Upvc double glazed window and radiator,

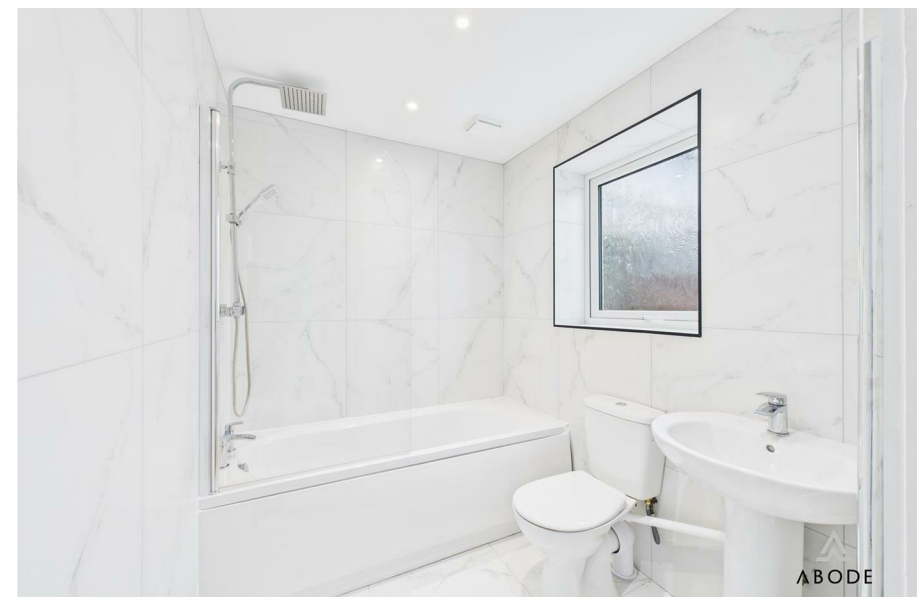
BATHROOM

Panel enclosed bath with a shower, low flush wc, wash hand basin, radiator and upvc double glazed window.

OUTSIDE

Ample parking to the front, side gated access to the enclosed rear garden with artificial lawn, patio and shed.



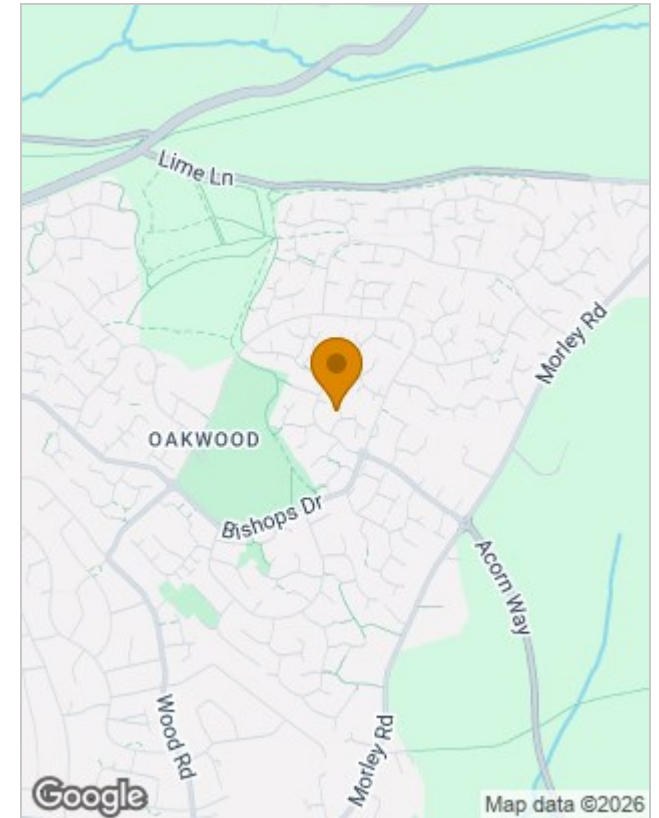




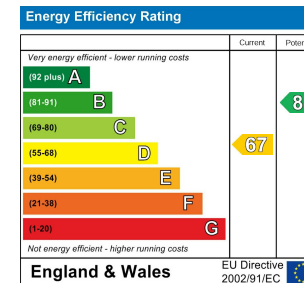
Floor Plans



Location Map



Energy Performance Graph



Please contact our Burton Lettings Office on 01283 845888 if you wish to arrange a viewing appointment for this property or require further information.

The particulars are set out as a general outline only for the guidance of intended purchasers or lessees, and do not constitute, any part of a contract. Nothing in these particulars shall be deemed to be a statement that the property is in good structural condition or otherwise nor that any of the services, appliances, equipment or facilities are in good working order. Purchasers should satisfy themselves of this prior to purchasing.